

# M.V ALBATROSS 37



# Vessel Specifications

## Registration

|                         |   |
|-------------------------|---|
| Year built / builder    | 2004 / Fujian Mawei Shipbuilding Ltd., China                                  |
| Flag / Port of registry | Indian / Mumbai   |
| Class                   | ABS, +A1, DP1, fire-fighting vessel class 1, offshore support vessel, E +AMS, |

## Dimensions

|                    |                        |
|--------------------|------------------------|
| Length overall     | 57.5 m                 |
| Breadth moulded    | 13.8 m                 |
| Depth moulded      | 5.5 m                  |
| Draft              | 4.5 m                  |
| Deadweight         | 1350 t                 |
| Registered tonnage | GRT 1387 t / NRT 416 t |

## Machinery

|                        |  |
|------------------------|--|
| Main engines           | 3000 bhp - 2 x 1500 bhp @ 1800 rpm, Caterpillar 3512B                  |
| Propulsion             | Fixed-pitch 360° Azimuths SRP 1010FR, Schottel                         |
| Bow thrusters          | 1 x Schottel STT330LK CPP, electric motor drive, 343 kw, 5 t thrust    |
| Main generator         | 3 x Caterpillar 3408, 280 kw each, 415 v / 50 Hz / 3 ph, diesel driven |
| Emergency generator    | 1 x 65 kw 415 v / 50 Hz / 3 ph, diesel driven                          |
| Oily water separator   | 1.0 m <sup>3</sup> / hr with 15 ppm alarm, make: Hamworthy             |
| Sewage treatment plant | 1 x 50 person capacity, make: Hamworthy ST-4A                          |

## Deck crane

|                |   |
|----------------|---|
| Starboard side | Sormec Marine Telescopic Boom Crane – M460/3S<br>Maximum outreach in horizontal position: 36.5 m radius<br>SWL 5 tons @ 36.5 meters working radius<br>SWL 10 tons @ 23 meters working radius<br>SWL 18 tons @ 7.5 meters working radius |
|----------------|---|

## Capacities 100%

|                             |  |
|-----------------------------|--|
| Fuel oil                    | 451 m <sup>3</sup>                             |
| Fresh water                 | 199 m <sup>3</sup>                             |
| Water ballast / drill water | 363 m <sup>3</sup>                             |
| Liquid mud                  | 162 m <sup>3</sup>                             |
| Bulk cement                 | 187 m <sup>3</sup> (4 x 1650 ft <sup>3</sup> ) |
| Lube oil                    | 5.3 m <sup>3</sup>                             |
| Dispersant / foam           | 13.5 m <sup>3</sup> each                       |
| Freezer and cooler          | 15 m <sup>3</sup> and 8 m <sup>3</sup>         |
| Clear deck area             | 376 m <sup>2</sup>                             |
| Deck cargo capacity         | 500 t @ 7 t / m <sup>2</sup>                   |

## Transfer rates

|                      |   |
|----------------------|---|
| Fuel oil             | 1 x 150 m <sup>3</sup> / hr @ 75 m head   |
| Fresh water          | 1 x 100 m <sup>3</sup> / hr @ 75 m head   |
| Drill water          | 1 x 100 m <sup>3</sup> / hr @ 75 m head   |
| Liquid mud           | 2 x 75 m <sup>3</sup> / hr @ 75 m head  |
| Cement system / bulk | 2 x 13 m <sup>3</sup> / min, 5.6 kg / cm <sup>2</sup> (80 psi) working pressure |

## Performance

|               |          |
|---------------|----------|
| Max speed     | 12 knots |
| Service speed | 10 knots |

## Towing / Anchor Handling / Mooring

|                 |  |
|-----------------|--|
| Anchor windlass | 1 x electro hydraulic with 2 cable lifters and 2 warping drums<br>Make: South China Marine |
| Anchor chain    | 1 x 192.5 m & 1 x 220 m x 34 mm diameter, grade U2 stud link chains                        |
| Anchors         | 2 x 1590 kg high-holding power   |
| Capstan         | 2 x 5 t @ 15 m / min electro hydraulic   |

# Vessel Specifications

## Navigation and communication

|                                    |  |
|------------------------------------|--|
| Inmarsat C                         | 2 x Furuno RC 1800 T                   |
| GMDSS                              | Furuno FM-8500, Area A3                |
| X-band radars                      | 1 x Furuno FR 1510, 1 x Furuno FR 2125 |
| GPS plotter                        | 1 x Furuno GP-80                       |
| AIS                                | 1 x Furuno FA 100                      |
| Autopilot                          | 1 x Anschutz Keil                      |
| Navtex receiver                    | 1 x Furuno NX 500                      |
| Gyro compass                       | 1 x Raytheon Standard 20               |
| Magnetic compass                   | 1 x Classen & Plath                    |
| Communications: data / fax / phone | 1 x Sailor / Mini M TT 3064A           |
| MF / HF SSB Radio                  | 1 x Furuno FS 2575e                    |
| Echo sounder                       | 1 x Furuno FE 700                      |
| MF / HF transceiver                | 1 x Furuno FS-1562-25                  |
| 2-way VHF radio                    | 3 x Motorola GP 340                    |
| SART                               | 2 x Seven Star Electronics SART S-701  |
| Speed log                          | 1 x Furuno DS 80                       |
| Weather facsimile receiver         | 1 x Furuno FAX 207                     |
| Anemometer                         | 1 x Obsermet OMC 139                   |
| EPIRB                              | 1 x Saracom EB 10                      |
| Joystick Control                   | 1 x Kongsberg SDP / SJS OT             |
| VSAT                               | 1 x 2 Astra                            |

---

## Fire-fighting equipment and antipollution equipment

|                     |   |
|---------------------|---|
| FIFI system         | FIFI Class 1 with water curtain all round   |
| FIFI monitors       | 2 x 1200 m <sup>3</sup> / hr @ 12 bar<br>1 x monitor driven by main engine<br>1 x monitor driven by independent diesel drive (CAT 3412)<br>1 x monitor fitted with double barrel for foam discharge |
| FIFI pumps          | 2 x 1500 m <sup>3</sup> / hr @ 14 bar   |
| Fire pumps          | 2 x 75 m <sup>3</sup> / hr  |
| Emergency fire pump | 1 x 25 m <sup>3</sup> / hr  |
| Fireman outfits     | 6 sets  |
| Fire extinguishers  | 11 x fire hydrants and fire extinguishers as per class requirements   |

---

## Safety equipment

|                                       |   |
|---------------------------------------|---|
| Rescue boat                           | 1 x 6 person - rescue boat with outboard engine |
| Life rafts                            | 6 x 25 person inflatable life rafts             |
| Life buoys / life jackets             | 8 nos / 62 nos                                  |
| MOB                                   | 2 x light smoke signal                          |
| Parachute distress signals            | 12 nos  |
| Hand flare distress and smoke signals | 12 nos each                                     |
| First aid kit                         | 1 no  |
| Immersion suits                       | 3 nos   |
| Floodlights / searchlights            | 5 x 1000 w / 2 x 2000 w                         |
| Air horn / electric horn              | 1 no each                                       |

---

## Accommodation (60 bunks)

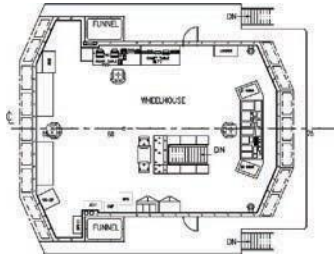
### 6 x 1 berth cabins = 6 berths

- 11 x 2 berth cabins = 22 berths
- 8 x 4 berth cabins = 32 berths
- 1 x hospital with 2 beds

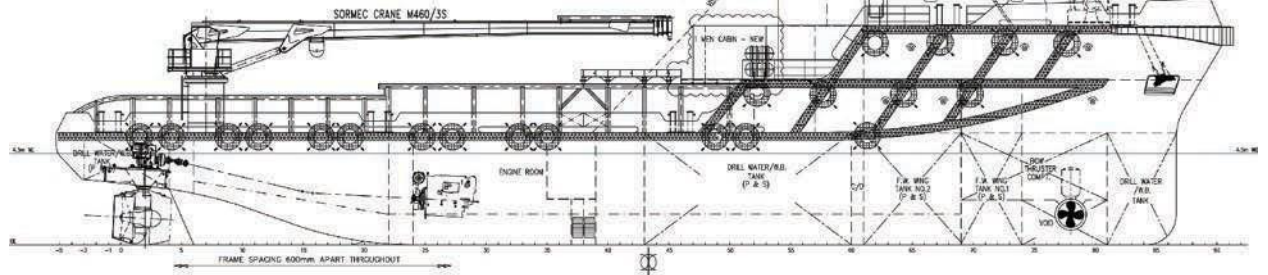
# Tank Capacities

|                             | SG    | Fuel oil      | Pot water     | Drill water   | Ballast water | Liquid mud    | Brine | Base oil | Glycol | Dry bulk      | Oil recovery |
|-----------------------------|-------|---------------|---------------|---------------|---------------|---------------|-------|----------|--------|---------------|--------------|
|                             | m³    | 0.850         | 1.000         | 1.000         | 1.025         | 2.500         | 2.500 | 0.830    | 1.120  | 2.40          | 1.00         |
| F.W. Wing Tank Port         | 60.02 |               | 60.02         |               |               |               |       |          |        |               |              |
| F.W. Wing Tank Stbd         | 60.02 |               | 60.02         |               |               |               |       |          |        |               |              |
| F.W. DB Tank Centre         | 79.51 |               | 79.51         |               |               |               |       |          |        |               |              |
| DW/WB FP TK (C)             | 53.67 |               |               | 53.67         |               |               |       |          |        |               |              |
| No. 1 DW/WB TK Stbd         | 22.76 |               |               | 22.76         |               |               |       |          |        |               |              |
| No. 1 DW/WB TK Port         | 22.76 |               |               | 22.76         |               |               |       |          |        |               |              |
| No. 2 DW/WB TK Port         | 36.80 |               |               | 36.80         |               |               |       |          |        |               |              |
| No. 2 DW/WB TK Stbd         | 37.96 |               |               | 37.96         |               |               |       |          |        |               |              |
| No. 3 DW/WB TK Port         | 51.42 |               |               | 51.42         |               |               |       |          |        |               |              |
| No. 3 DW/WB TK Stbd         | 51.42 |               |               | 51.42         |               |               |       |          |        |               |              |
| No. 4 DW/WB TK Center       | 57.67 |               |               | 57.67         |               |               |       |          |        |               |              |
| No. 5 DW/WB TK Stbd         | 14.32 |               |               | 14.32         |               |               |       |          |        |               |              |
| No. 5 DW/WB TK Port         | 14.32 |               |               | 14.32         |               |               |       |          |        |               |              |
| No. 1 FO DB TK Stbd         | 47.43 | 40.32         |               |               |               |               |       |          |        |               |              |
| No. 1 FO DB TK Port         | 45.96 | 39.07         |               |               |               |               |       |          |        |               |              |
| No. 2 FO DB TK Stbd         | 47.65 | 40.50         |               |               |               |               |       |          |        |               |              |
| No. 2 FO DB TK Port         | 49.27 | 41.88         |               |               |               |               |       |          |        |               |              |
| No. 1 FO Wing Stbd          | 34.66 | 29.46         |               |               |               |               |       |          |        |               |              |
| No. 1 FO Wing Port          | 34.66 | 29.46         |               |               |               |               |       |          |        |               |              |
| No. 2 FO Wing Stbd          | 86.33 | 73.38         |               |               |               |               |       |          |        |               |              |
| No. 2 FO Wing Port          | 86.33 | 73.38         |               |               |               |               |       |          |        |               |              |
| FO Day Tank Stbd            | 9.37  | 7.96          |               |               |               |               |       |          |        |               |              |
| FO Day Tank Port            | 9.37  | 7.96          |               |               |               |               |       |          |        |               |              |
| Liquid Mud Tank # 1         | 94.98 |               |               |               |               | 237.45        |       |          |        |               |              |
| Liquid Mud Tank # 2         | 67.03 |               |               |               |               | 167.58        |       |          |        |               |              |
| Lube Oil Tank               | 5.30  |               |               |               |               |               |       |          |        |               |              |
| Foam Tank                   | 13.45 |               |               |               |               |               |       |          |        |               |              |
| Detergent Tank              | 13.45 |               |               |               |               |               |       |          |        |               |              |
| Bilge Holding               | 6.92  |               |               |               |               |               |       |          |        |               |              |
| Dirty Oil Tank              | 6.92  |               |               |               |               |               |       |          |        |               |              |
| Dry Bulk # 1                | 46.72 |               |               |               |               |               |       |          |        | 112.13        |              |
| Dry Bulk # 2                | 46.72 |               |               |               |               |               |       |          |        | 112.13        |              |
| Dry Bulk # 3                | 46.72 |               |               |               |               |               |       |          |        | 112.13        |              |
| Dry Bulk # 4                | 46.72 |               |               |               |               |               |       |          |        | 112.13        |              |
| <b>Total weight in tons</b> |       | <b>383.38</b> | <b>199.55</b> | <b>363.10</b> |               | <b>405.03</b> |       |          |        | <b>448.51</b> |              |
| <b>Total volume in m³</b>   |       | <b>451.0</b>  | <b>199.55</b> | <b>363.10</b> |               | <b>162.01</b> |       |          |        | <b>186.88</b> |              |

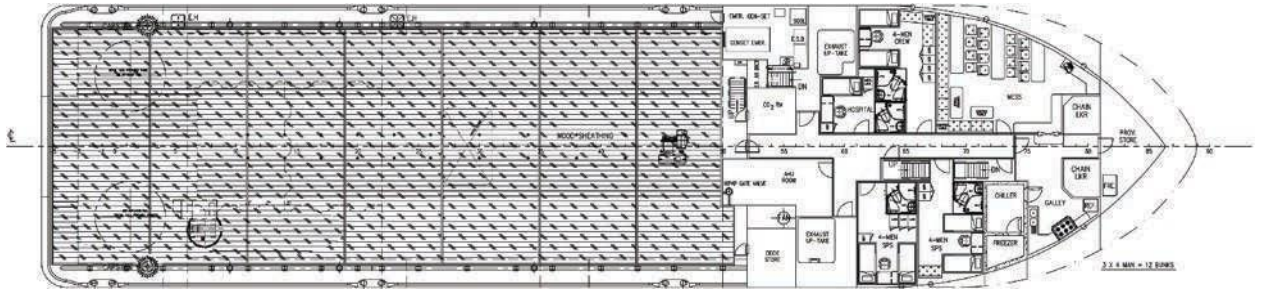
# GA Specifications



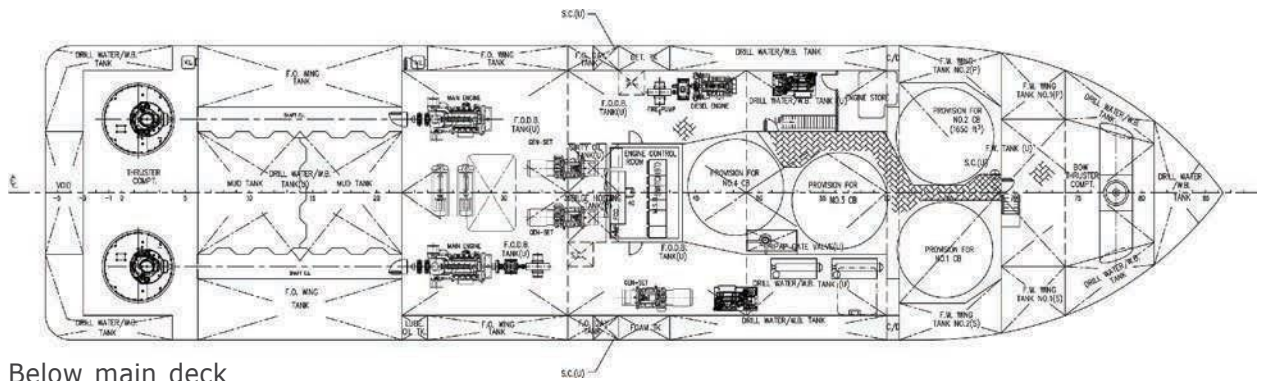
Nav. bridge deck



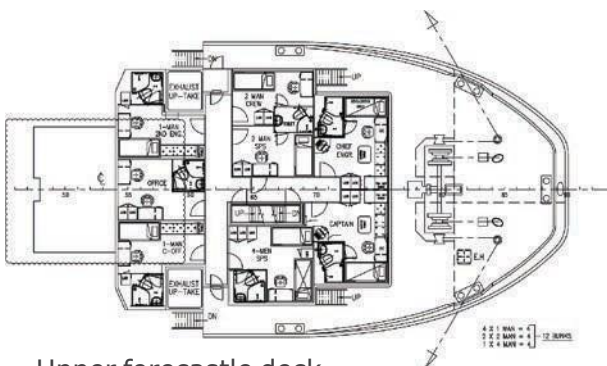
Outboard profile



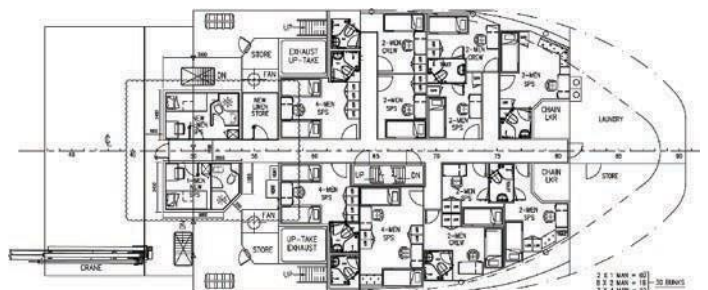
Main deck



Below main deck



Upper forecastle deck



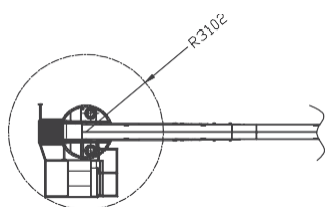
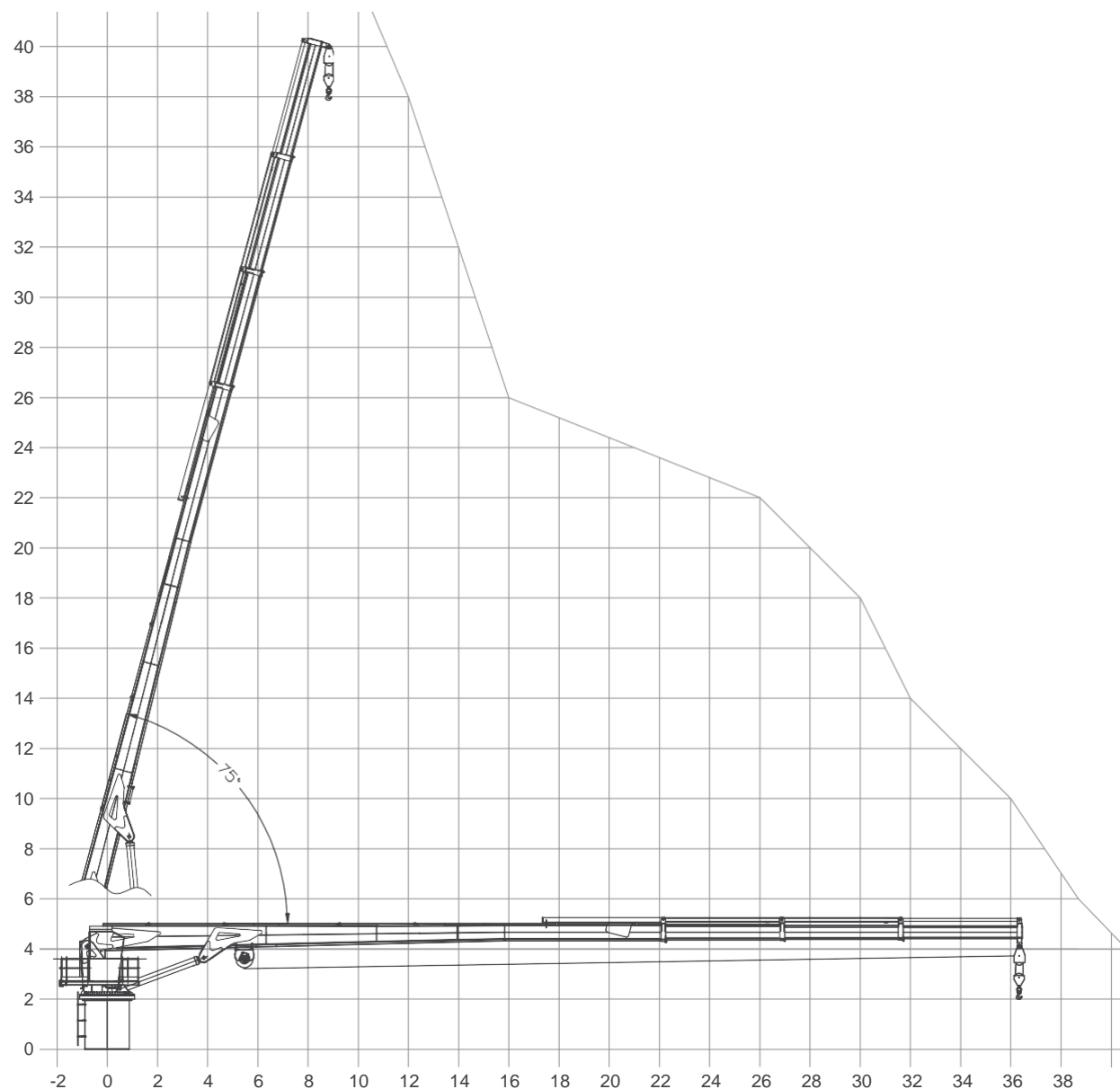
Forecastle deck

# SORMEC Marine Cranes - M460/3S

## Technical Data

|                           |         |            |
|---------------------------|---------|------------|
| Max. Outreach             | (m)     | 36.5       |
| Slewing angle             |         | Continuous |
| Rotating velocity         | (rpm)   | 0.6        |
| Max. working pressure     | (bar)   | 280        |
| Recommended pump delivery | (l/min) | 230        |
| Oil tank capacity         | (l)     | 1200       |

SORMEC Marine Crane is designed according to the German Crane Code DIN 15018.



|               |          |          |          |          |
|---------------|----------|----------|----------|----------|
| HARBOUR       | mm 23000 | mm 27500 | mm 32000 | mm 36500 |
|               | kg 10000 | kg 7500  | kg 5900  | kg 5000  |
| SEA STATE 1   | mm 23000 | mm 27500 | mm 32000 | mm 36500 |
|               | kg 8000  | kg 6000  | kg 4720  | kg 4000  |
| SEA STATE 2-3 | mm 23000 | mm 27500 | mm 32000 | mm 36500 |
|               | kg 6500  | kg 4875  | kg 3835  | kg 3250  |
| STATIC SWL    | mm 7500  | mm 12000 | mm 18000 |          |
|               | kg 18000 | kg 18000 | kg 13500 |          |
| DYNAMIC SWL** | mm 7500  | mm 12000 | mm 18000 |          |
|               | kg 10200 | kg 10200 | kg 8000  |          |